

## SITE LOCATION



COOK INLET ENERGY, LLC.  
TRADING BAY, ALASKA  
October 27, 2010

POA-2012-927, Cook Inlet  
Sheet 1 of 4

VICINITY MAP FOR PROPOSED WEST McARTHUR PAD EXTENSION





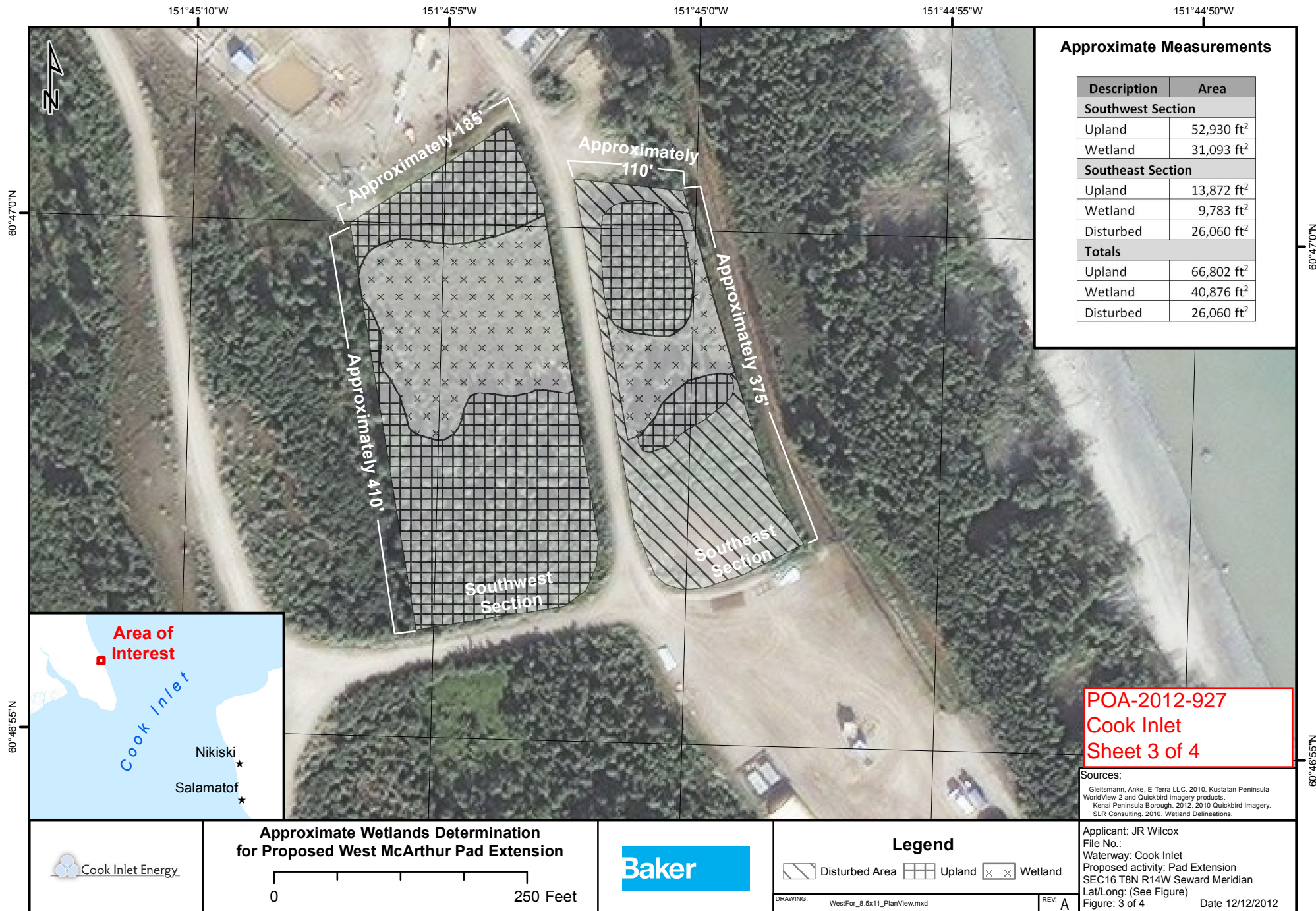
— PROPOSED LOCATION  
FOR PAD EXTENSION

POA-2012-927, Cook Inlet  
Sheet 2 of 4

PROPOSED LOCATION FOR WEST McARTHUR PAD EXTENSION

COOK INLET ENERGY, LLC.  
TRADING BAY, ALASKA  
October 27, 2010





### Approximate Measurements

Description	Area
<b>Southwest Section</b>	
Upland	52,930 ft <sup>2</sup>
Wetland	31,093 ft <sup>2</sup>
<b>Southeast Section</b>	
Upland	13,872 ft <sup>2</sup>
Wetland	9,783 ft <sup>2</sup>
Disturbed	26,060 ft <sup>2</sup>
<b>Totals</b>	
Upland	66,802 ft <sup>2</sup>
Wetland	40,876 ft <sup>2</sup>
Disturbed	26,060 ft <sup>2</sup>



**POA-2012-927**  
**Cook Inlet**  
**Sheet 3 of 4**

**Sources:**  
 Gleitsman, Anke, E-Terra LLC. 2010. Kustatan Peninsula  
 WorldView-2 and Quickbird imagery products.  
 Kenai Peninsula Borough. 2012. 2010 Quickbird Imagery.  
 SLR Consulting. 2010. Wetland Delineations.

**Approximate Wetlands Determination  
for Proposed West McArthur Pad Extension**

0 250 Feet

**Legend**

Disturbed Area

Upland

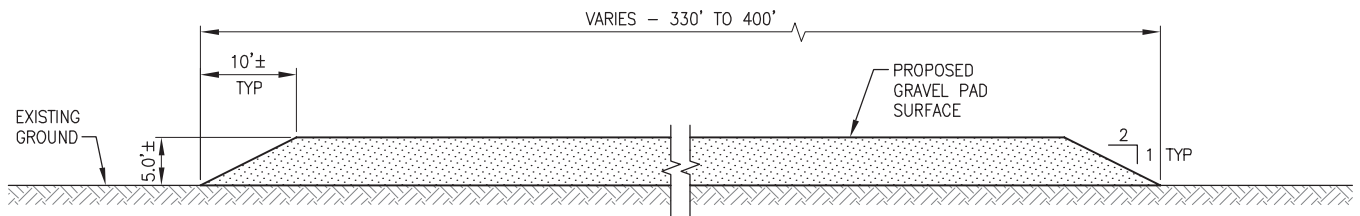
Wetland

**Applicant:** JR Wilcox  
**File No.:**  
**Waterway:** Cook Inlet  
**Proposed activity:** Pad Extension  
**SEC16 T8N R14W Seward Meridian**  
**Lat/Long:** (See Figure)  
**Figure:** 3 of 4

**Date:** 12/12/2012

DRAWING: WestFor\_8.5x11\_PlanView.mxd

REV: A



**PROPOSED GRAVEL PAD SECTION – EAST TO WEST**  
NOT TO SCALE

**POA-2012-927**  
**Cook Inlet**  
**Sheet 4 of 4**

APPLICANT: JR Wilcox  
FILE NO.:  
WATERWAY: Cook Inlet  
PROPOSED ACTIVITY: West McArthur Gravel Pad Extension